



MADE IN THE USA



Quick Mount PV[®]

RESPECT THE ROOF[®]

The industry standard for 100% code-compliant,
waterproof solar roof mounts

- Residential & Commercial
- Low Slope & Steep Slope
- New Roofs & Retrofit







Securing the Future of Rooftop Solar

With a passion for solar energy and a commitment to doing solar right, Quick Mount PV was founded in 2006 to bring cost-effective, code-compliant, waterproof rooftop mounting systems to the solar industry. As PV installers and general contractors, Quick Mount PV founders Stuart Wentworth and Claudia Wentworth saw too many rooftop mounts that were doomed to failure, posing a threat not only to any given roof and building, but to the burgeoning solar PV industry itself.

Engineering a Solution

Recognizing the dual challenge of rooftop solar – the need for fast installation and the demand that every attachment be absolutely watertight – Quick Mount PV innovated the patented QBlock Elevated Water Seal, which raises the waterproofing barrier up off the roof. By attaching the QBlock to an all-aluminum flashing, installing the mount was made fast and simple, requiring only a single bolt.

The resulting Classic Composition Mount became an instant hit in a market hungry for effective mounting solutions and remains today the industry's best-selling solar roof mount.

Other innovations followed, most notably the QBase reinforced foundation. The QBase took traditional base-and-post mounting technology to its ultimate level, providing unrivaled strength and enabling higher standoffs.

Quick Mount PV is committed to ongoing innovation to continually perfect the art of rooftop solar mounting for all types of roofs.

Respecting the Roof

Because a fail-safe attachment requires roofing knowledge as well as superior equipment, Quick Mount PV pioneered the adoption of best roofing practices in the solar industry with extensive industry training and education. Quick Mount PV has trained thousands of solar professionals throughout North America and continues to expand its education program with hands-on training, classroom instruction, webinars, and a growing array of online videos and information downloads. In 2012, the company completed a state-of-the-art in-house training facility.

Meeting the Demand with Made-in-America Products

The company has grown at 70+ percent per year to meet rapidly rising demand. Quick Mount PV employs 70 people in its Northern California headquarters, where it fabricates all company products.

Led by a team of seasoned executives, Quick Mount PV is fully committed to the solar industry, to sustainable business practices, and to manufacturing in the USA.



All company products are designed, engineered and fabricated in our 89,000 sq. ft. facility in Walnut Creek, CA.

PRODUCT OVERVIEW

PRODUCT FAMILY	Applicable Roof Types	New Roof	Retrofit	Flashing Included	Hardware Included *	# of Roof Attachments
Classic Comp & Shake pg 3	 QMSC & QMLC	composition shingle, shake	✓	✓	✓	1
QBase Low Slope pg 4	 QMLSH	PVC, TPO, EPDM & built-up roofs	✓	✓	**	2 or 4
QBase Comp pg 5	 QMNC	composition shingle	✓	***	✓	2 or 4
QBase Universal Tile pg 6	 QMUTM	curved or flat tile	✓	✓	✓	2 or 4

* All exposed hardware is 18-8 stainless steel.

** The QBase Low Slope Mount is sold without flashing. For use on built-up asphalt roofs, aluminum flashing is available separately from Quick Mount.

*** The QBase Comp Mount can also be used for retrofit when two points of attachment are required.

WARNING: Quick Mount PV products are NOT designed and should NOT be used for anchoring fall protection equipment.

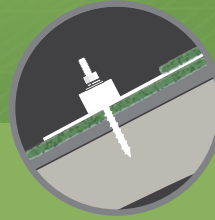
Show Your Customers You Use the Very Best

Use our **Quick Mount Seal** to help “seal the deal” with your sales prospects. Place the seal in your ads, on your website, and in your sales literature to show you care enough to use the industry standard in waterproof flashed mounts to protect your customers' roofs. Contact us to get the Quick Mount Seal in the sizes and formats to meet your needs.





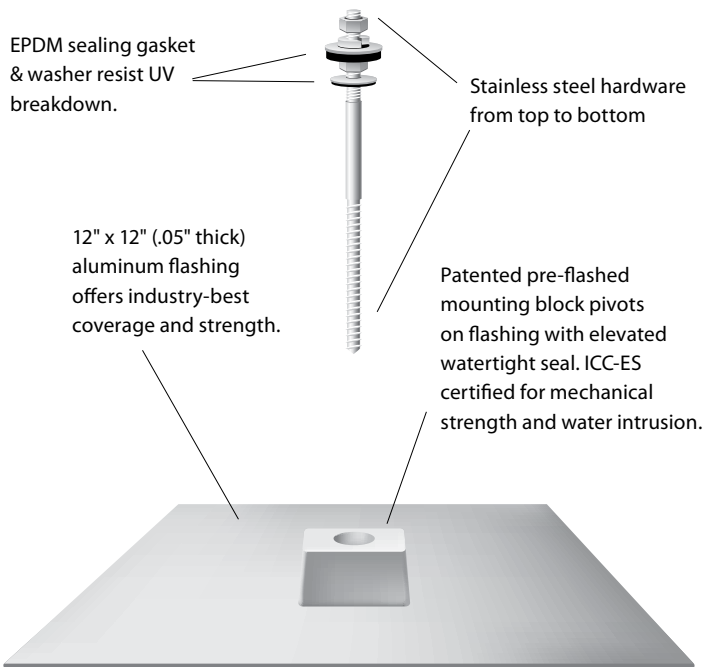
CLASSIC COMP/SHAKE



- ✓ Residential
- ✓ Retrofit
- ✓ Steep slope
- ✓ Composition shingle roofs
- ✓ Shake roofs

QMSC & QMLC

Superior Waterproofing Technology



Our Classic Comp & Shake Mounts are the recognized industry standard for off-the-shelf, code compliant, waterproof mounts, and the fastest to install on existing composition shingle and shake roofs.



FEATURES

- ▶ Patented elevated water seal
- ▶ ICC-ES certified
- ▶ One-bolt installation
- ▶ No shingle cutting
- ▶ 100% IBC compliant
- ▶ Meets or exceeds all roofing industry best practices
- ▶ 2554 lbs. average pullout (Douglas fir); 2203 lbs. average shear (see engineering report at quickmountpv.com)
- ▶ All aluminum flashing and mount
- ▶ All hardware included; all exposed hardware is 18-8 stainless steel
- ▶ 10-year warranty; 50-year expected life
- ▶ Works with all leading racks
- ▶ Won't void roof manufacturer's warranty
- ▶ Approved for use by leading roof manufacturers
- ▶ Patent numbers 7,762,027 & 7,895,808



Ideal for Solar Water Heating Systems



The strength and durability that make our Classic Comp & Shake Mounts the best choice for PV also make them perfect for solar water heating systems.

EACH MOUNT KIT (12 per box) contains:

- ▶ Cast aluminum mounting block (2¼" L x 1¼" W x 1¼" H) bonded with .05" thick, 12" x 12" aluminum flashing. 18" x 18" in shake roof version.
- ▶ Hanger bolt, 5/16" x 6" (1¼" machine, 1¾" shank, 3" lag) (3/8" hanger bolt also available for solar water heating or PV systems)
- ▶ EPDM-bonded stainless steel sealing washer, 5/16" x 3/4"
- ▶ Two stainless steel hex nuts, 5/16"
- ▶ EPDM sealing gasket with 60 Durometer hardness
- ▶ Stainless steel fender washer
- ▶ Stainless steel split lock washer, 5/16"

Available finishes (both Comp and Shake): aluminum mill (A), clear anodized (C), bronze anodized (B)



QBASE LOW SLOPE



QMLSH

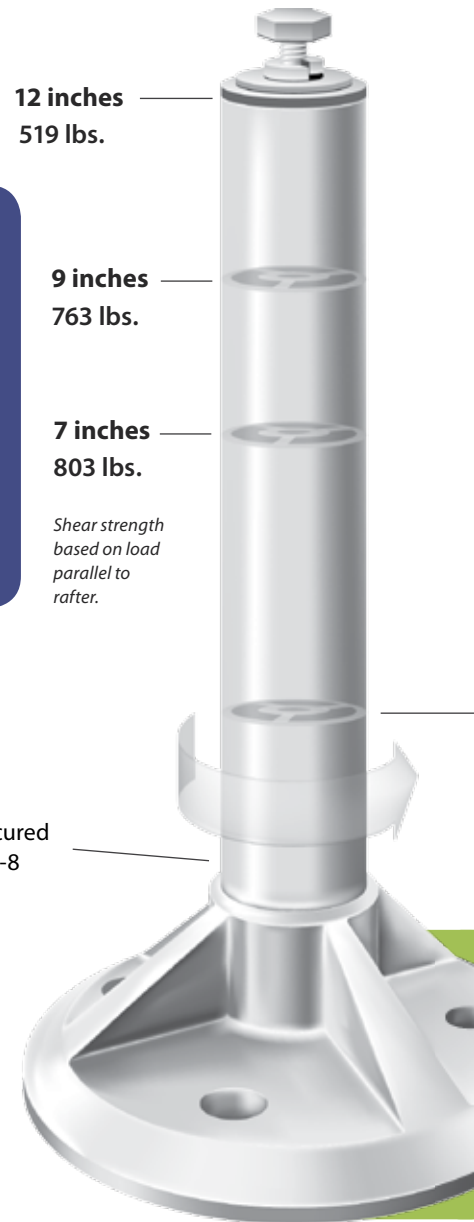
- ✓ Commercial
- ✓ New roof
- ✓ Retrofit
- ✓ Low slope
- ✓ TPO, PVC, EPDM roofs
- ✓ Built-up roofs

Quick Mount's QBase Low Slope Mount takes the traditional base-and-post mount to its ultimate level. It's the strongest you can buy for mechanically attaching commercial PV systems to TPO, PVC, EPDM, built-up asphalt, and virtually all other non-metal low slope roofs.



QBase Low Slope Mount on a single-ply membrane roof

The unprecedented strength of the QBase enables low-slope roof standoffs up to 12 inches with industry-best shear strength. See quickmountpv.com for full engineering reports.



Detachable post is secured to QBase with a grade-8 machine bolt.

FEATURES

- ▶ Code compliant for all non-metal low slope roofs
- ▶ QBase is the strongest off-the-shelf mechanical mount
- ▶ 3031 lbs. average pullout (Douglas fir) (see engineering report at quickmountpv.com)
- ▶ All exposed hardware is 18-8 stainless steel
- ▶ 3 post heights offer 7", 9" and 12" clearance off the deck
- ▶ Attaches to roof structure with 2 or 4 fasteners
- ▶ All fasteners and related hardware included
- ▶ Mounts entire solar array
- ▶ 100% IBC compliant
- ▶ Meets or exceeds all roofing industry best practices
- ▶ 10-year warranty; 50-year expected life
- ▶ Works with all leading racks
- ▶ Patents pending

EACH MOUNT KIT (12 per box) contains:

- ▶ Cast aluminum QBase
- ▶ Two zinc-coated steel lag bolts, $\frac{5}{16}$ " x 3"
- ▶ Aluminum post, 1.25" x 6.5", 8.5" or 11.5"
- ▶ EPDM-bonded stainless steel sealing washer, $\frac{5}{16}$ " x 1 $\frac{3}{4}$ "
- ▶ Stainless steel machine bolt, $\frac{5}{16}$ " x 1"
- ▶ Stainless steel fender washer
- ▶ Stainless steel split lock washer, $\frac{5}{16}$ "
- ▶ Grade-8 machine bolt, $\frac{5}{16}$ " x $\frac{3}{4}$ "

Available finishes for post: aluminum mill (A), clear anodized (C), bronze anodized (B)





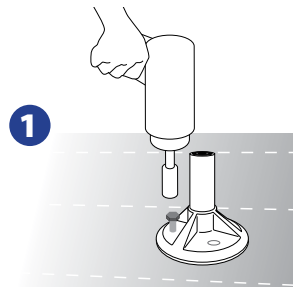
QBASE COMP



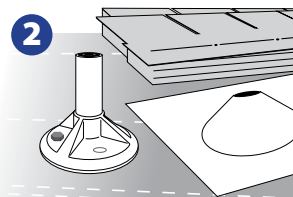
- ✓ Residential
- ✓ New roof
- ✓ Retrofit
- ✓ Steep slope
- ✓ Composition shingle roofs

EASY AS 1, 2, 3!

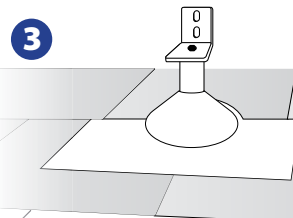
Integrating solar with the construction of a new roof is a great idea, but making the installation smooth and cost effective requires a coordinated effort between the various trades who help put the PV system on the roof. The QBase Comp Mount installs in 3 steps to facilitate the workflow between the trades.



1 Mount the QBase and post after the sheeting is nailed down...



2 ...leave the flashing for the roofers to install with the roof...



3 ...then install the array after the roofing is finished!

3.75 inches
1972 lbs.

QBase: Where the Roof Meets the Load

Our QBase Composition, Low Slope, and Universal Tile Mounts are built around the all-aluminum QBase foundation. With four gussets to support the load, the QBase makes these solar mounts the world's strongest - *by far*.

Quick Mount PV's QBase Composition Mount (formerly called New Roof Comp Mount) is designed to smoothly fit into the workflow between the trades while installing solar arrays during new home construction or roof replacement. This mount uses a 3.75-inch standoff with the QBase for a clean, sleek look.

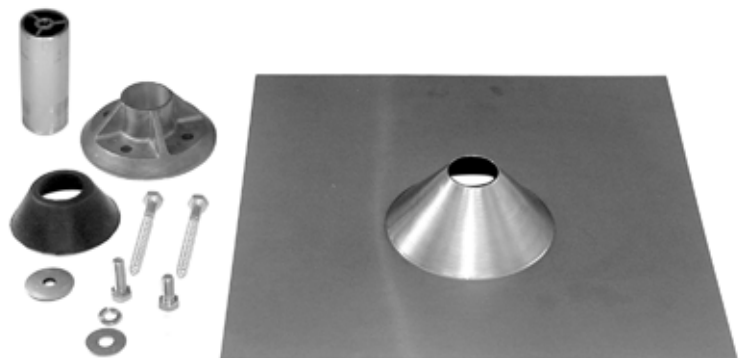


FEATURES

- ▶ 3-step process aids installation collaboration between roofers and PV installers
- ▶ Cone flashing is spun aluminum with no welds or seams to rust or rot
- ▶ Flashing holds firm against wind-driven rain
- ▶ QBase is the strongest off-the shelf mechanical mount
- ▶ 3031 lbs. average pullout (douglas fir); 1972 lbs. average shear (see engineering reports at quickmountpv.com)
- ▶ All hardware included
- ▶ All exposed hardware is 18-8 stainless steel
- ▶ Allows up to 4 structural attachments for retrofit installations where multiple attachments are required
- ▶ EPDM post collar/counter flashing fits tight without sealant
- ▶ 100% IBC compliant
- ▶ Meets or exceeds all roofing industry best practices
- ▶ 10-year warranty; 50-year expected life
- ▶ Works with all leading racks
- ▶ Patents pending

EACH MOUNT KIT (12 per box) contains:

- ▶ Cast aluminum QBase
- ▶ Aluminum post, 1.25" x 3.25"
- ▶ 12" x 12" spun aluminum cone flashing
- ▶ Two zinc-coated steel lag bolts, 5/16" x 3"
- ▶ EPDM post collar/counter flashing
- ▶ EPDM-bonded stainless steel sealing washer, 5/16" x 1 1/4"
- ▶ Stainless steel machine bolt, 5/16" x 1"
- ▶ Stainless steel fender washer
- ▶ Stainless steel split lock washer, 5/16"
- ▶ Grade-8 machine bolt, 5/16" x 3/4"



Available finishes: aluminum mill (A), bronze anodized (B), clear anodized (C) available through special order.

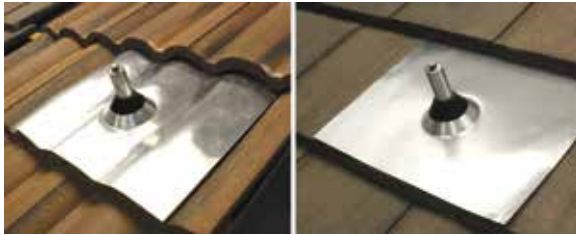
QBASE UNIVERSAL TILE



QMUTM

- ✓ Residential
- ✓ New roof
- ✓ Retrofit
- ✓ Steep slope
- ✓ Curved & flat tile roofs

The Quick Mount PV QBase Universal Tile Mount is double flashed. The secondary top flashing is malleable, so it works equally well for both curved and flat tile roofs. Both flashings feature a spun aluminum cone, with no seams to fail in extreme weather. The reinforced QBase makes for an extraordinarily strong foundation. Ideal for both retrofit and new roof installations.



FEATURES

- ▶ Flashes all tile roofs, curved or flat
- ▶ Flashed at both the deck and tile level
- ▶ Large malleable aluminum top flashing
- ▶ QBase is the strongest off-the-shelf mechanical mount
- ▶ 3031 lbs. average pullout (Douglas fir); 803 lbs. average shear (see engineering report at quickmountpv.com)
- ▶ All fasteners and hardware included
- ▶ All exposed hardware is 18-8 stainless steel
- ▶ Attaches to roof structure with 2 or 4 fasteners
- ▶ 100% IBC compliant



The QBase Universal Tile Mount uses the QBase foundation plus two spun aluminum cone flashings to keep out the rain. The malleable top flashing conforms to fit virtually any tile roof. And the primary sub-flashing at the roof deck forms a waterproof shield isolating all penetrating fasteners from water intrusion.

- ▶ Meets or exceeds all roofing industry best practices
- ▶ 10-year warranty; 50-year expected life
- ▶ Works with all leading racks
- ▶ Patents pending

EACH MOUNT KIT (12 per box) contains:

- ▶ Cast aluminum QBase
- ▶ Aluminum post, 1.25" x 6.5"
- ▶ 9" x 9" spun aluminum cone sub-flashing
- ▶ 18" x 18" spun aluminum cone malleable top flashing
- ▶ Two zinc-coated steel lag bolts, 5/16" x 3"
- ▶ Stainless steel machine bolt, 5/16" x 1"
- ▶ EPDM post collar/counter flashing
- ▶ EPDM-bonded stainless steel sealing washer, 5/16" x 1 1/4"
- ▶ Stainless steel fender washer
- ▶ Stainless steel split lock washer, 5/16"
- ▶ Grade-8 machine bolt, 5/16" x 3/4"

Available finishes: aluminum mill (A), bronze anodized (B)



SPECIALTY MOUNTS

SPECIALTY FLAT TILE MOUNT : QMFTM

Quick Mount PV's Specialty Flat Tile Mount is an easy to use, double-flashed, standoff-and-base mounting assembly for most standard flat concrete tile roofs. A pre-formed spun aluminum top flashing completely replaces a standard 12" x 17" interlocking concrete tile. There's no drilling or cutting the tiles. At the roof deck, a 9.5" x 10" spun aluminum primary flashing is designed to seal out water intrusion and is molded to shield the base plate and fasteners from water. All mounting hardware included; all exposed hardware is 18-8 stainless steel. *Patent number 7,861,485.*



EACH MOUNT KIT (12 per box) contains:

- ▶ Cast aluminum base plate, 5.5" x 3.5" x 0.5"
- ▶ 9.5" x 10" spun aluminum primary flashing
- ▶ 12" x 17" fitted aluminum top flashing
- ▶ 1.25" x 5.5" extruded aluminum post
- ▶ Grade-8 machine bolt, 5/16" x 3/4"
- ▶ Stainless steel machine bolt, 5/16" x 1"
- ▶ Four zinc-coated steel lag bolts, 1/4" x 1 1/2"
- ▶ EPDM post collar/counter flashing
- ▶ EPDM-bonded stainless steel sealing washer, 5/16" x 1 1/4"
- ▶ Stainless steel fender washer
- ▶ Stainless steel split lock washer, 5/16"



Available finishes: aluminum mill (A), clear anodized (C), bronze anodized (B)

CLASSIC CONDUIT MOUNT : QMCC

The Classic Conduit Mount lifts conduit off the roof to protect wiring from overheating. These mounts use our patented elevated seal waterproofing technology to protect the roof penetration, and aluminum and stainless steel parts to secure the conduit for the life of the system. Available for composition and wood shake roofs.

The Classic Conduit Mount flashing measures 9 x 12 inches. The mount uses a standard single-hole conduit clamp for 1/2" to 1-1/2" conduits. Mounting hardware included; conduit clamp not included.

Available finishes: aluminum mill (A), clear anodized (C), bronze anodized (B)



CLASSIC POOL PANEL MOUNT : QMPC

The Classic Pool Panel Mount works with all strap-down pool panels. These flashed mounts seal out the rain and secure the solar collector to the roof. Anchor the waterproof Quick Mounts to the roof on either side of the collector and use flat rope straps (not included) to hold it securely in the wind.

Quick Mount PV's Classic Pool Panel Mounts work with composition shingles and wood shake roofing. All hardware and butterfly clip included.

Available finishes: aluminum mill (A), clear anodized (C), bronze anodized (B)



TOOLS & ACCESSORIES

Dasco Pro 24" Shingle Ripper

The Dasco Pro 24" shingle ripper helps make your installations faster and more efficient. The tapered steel handle won't damage removed shingles or surrounding pieces. Removes all types of shingles. Also removes nails.

- ▶ **QMRB 1:** 24" shingle ripper



Extensions

Use these aluminum extensions with our Classic Composition and Shake Mounts to add height when needed between the modules and the roof. The extensions are available in 2½, 3¼, and 4-inch lengths. 12 extensions per pack.

- ▶ **QMEXT-2.5:** (12) 2½" extensions with hardware
- ▶ **QMEXT-3.25:** (12) 3¼" extensions with hardware
- ▶ **QMEXT-4.0:** (12) 4" extensions with hardware

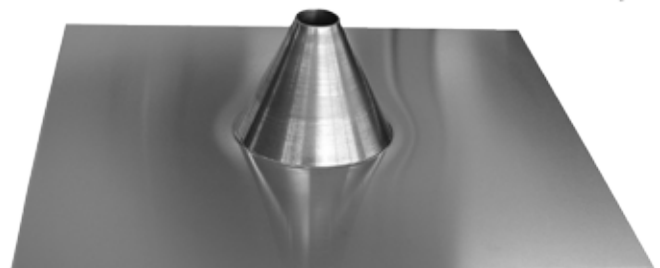


Available finishes: aluminum mill (A), clear anodized (C), bronze anodized (B)

Aluminum Flashing for QBase Low Slope Mount

For built-up asphalt roofs (BUR) and other bitumen and modified bitumen roofs, we offer aluminum flashings in 4" and 8" tall cones (not included with QBase Low Slope Mount kit).

- ▶ **QMLSF-4:** (12) 4" Aluminum flashing cones
- ▶ **QMLSF-8:** (12) 8" Aluminum flashing cones



Hardware Sets

We offer additional hanger bolts in lengths of 6, 8, 10 and 12 inches. To maintain pullout and shear strength, only the shank of the hanger bolt is lengthened to help span insulation, fire board, and other rooftop layers. Custom lengths are available upon request. 12 bolts per pack.

- ▶ **QMHS-6** (12) 6" stainless steel hanger bolts with nuts & washers
- ▶ **QMHS-8:** (12) 8" stainless steel hanger bolts with nuts & washers
- ▶ **QMHS-10:** (12) 10" stainless steel hanger bolts with nuts & washers
- ▶ **QMHS-12:** (12) 12" stainless steel hanger bolts with nuts & washers



Training Bolts

We also offer 6" hanger bolts for training, with a fixed bottom nut enabling repeated insertion and removal.

- ▶ **QMHS-6:** (12) 6" training bolts (not shown)

Adapter & Sockets

These ½" and 7/16" 12-point sockets work with a 3/8" driver.

- ▶ **QMSA-.375 1:** Socket adapter
- ▶ **QMDS-.50 1:** Deep socket, ½"
- ▶ **QMDS-.4375 1:** Deep socket, 7/16"



Torque Wrench

- ▶ **QMTW 1:** Torque wrench

IMPORTANT: Properly flashing penetrations on PVC, TPO and other single-ply membrane roofs requires the use of manufacturer-specified flashing material to ensure safe chemical interaction with the specific type of membrane roof. Always use the services of a certified roofer when installing PV on a membrane roof.

Are You Up To Code?

As a solar installer, understanding your relationship to the various code makers and enforcers can make the difference between passing and failing an inspection, and, equally important, help you maintain any roof warranties in place and reduce your long-term liability for the installation.

After extensively studying the relevant organizations, codes and guidelines that impact rooftop structures and waterproofing, we created the **Wheel of Accountability** to help solar designers and installers better understand these important relationships and responsibilities.

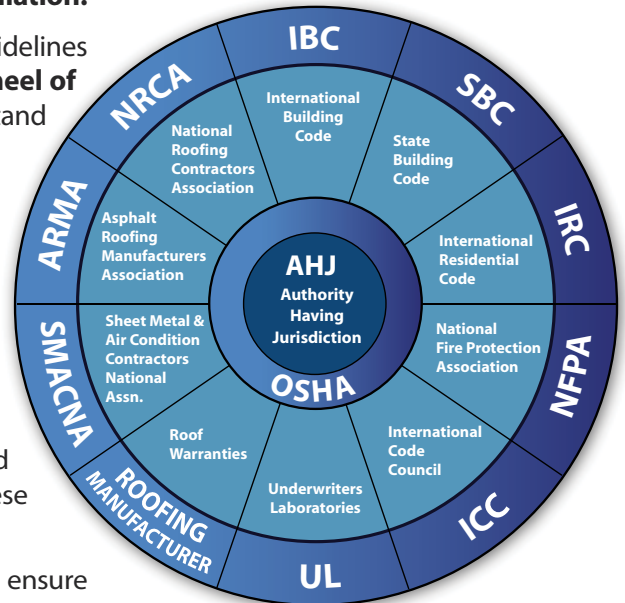
The AHJ (Authority Having Jurisdiction) – typically the local building inspector – is at the center of the Wheel. The AHJ has the final say on your installation, as he interprets the building codes and standards and is empowered to act on behalf of any of the entities listed on the Wheel to make sure you have met their requirements.

The ICC, SMACNA, NRCA and ARMA help provide time-tested, best-practice guidelines for roofing, buildings, and other enclosed structures. These guidelines are published by the IBC, IRC, SBC and NFPA, and also in manuals compiled by the individual trade groups. These manuals are available for purchase on the web.

The ICC and UL provide quality standards and testing methods to ensure product-manufacturing compliance. OSHA focuses exclusively on workplace safety and can shut down any job site and/or fine an installer for unsafe workplace practices.

The roofing manufacturer is also important because their installation instructions must be followed closely to prevent voiding the roof warranty and to limit long-term exposure to the owner and contractor.

See quickmountpv.com for detailed descriptions of these key players and relevant building codes.



WHEEL OF ACCOUNTABILITY

Training, Service & Support

Quick Mount PV products are sold exclusively through our national network of distributors, and we offer training and support to their customers – the solar integrators and installers, roofers, electricians, HVAC technicians, general contractors, and other professionals who design and install systems with Quick Mount PV products.

Year-Round Training Opportunities

We offer product and installation training in many venues from trade shows and distributor events to hands-on training. We also provide webinars, online instructional videos, and information downloads. In late 2012, we launched our 3400 sq. ft. onsite Solar Rooftop Training Center. Visit our website for more details.

All our classes qualify for NABCEP Continuing Education Credits for NABCEP-certified installers.

Email training@quickmountpv.com or visit quickmountpv.com for a list of upcoming training opportunities and webinars.

Responsive Customer Service

When you call Quick Mount PV during business hours, you'll get a real person to talk to. We do our very best to respond to all inquiries, emails and requests within 24 hours.

Live Tech Support

Contact Tech Support between 8 AM and 4:30 PM, Pacific Time, Monday through Friday. You can also email tech@quickmountpv.com with your questions. And you can visit the FAQ section of our website for answers to common questions.



THE RECOGNIZED INDUSTRY STANDARD

- Simple, fast installation
- Unmatched strength
- 100% code compliant
- Commercial & residential solutions
- All hardware included
- 50-year life cycle

Memberships & affiliations:

SEIA, NRCA, ANSI, ASES, ISES, ICC, SEPA, NORCAL SOLAR,
CALSEIA, COSEIA, CEIR, RISE, NFPA, NABCEP, WSRCA,
BAY AREA GREEN BUSINESS

PHOTO CREDITS:

Sungevity - top photo, cover

Fidelity Roof Company - bottom photo, cover; top photo, p4

National Solar Inc. - top photo, p3

Scurfield Solar - solar hot water photo, p3

Creative Energies - inside cover, top photo, p5

Distributed by:

Quick Mount PV[®]
RESPECT THE ROOF[®]

(925) 478-8269

2700 Mitchell Dr., Bldg 2

Walnut Creek, CA 94598

sales@quickmountpv.com

www.quickmountpv.com

