

### Built for solar's toughest roofs.

IronRidge builds dependable systems for mounting solar on homes. XR Rail® components have been tested to the limit and proven to endure extreme environments, including Florida's high-velocity hurricane zones.

Our rigorous approach has led to unique structural features, such as curved rails and reinforced flashings, and is also why our products are fully-certified, code-compliant and backed by a 25-year warranty.



#### Strength Tested

All components evaluated for superior structural performance.



#### PE Certified

Pre-stamped engineering letters available in most states.



#### Class A Fire Rating

Certified to maintain the fire resistance rating of the existing roof.



#### Design Assistant

Online software makes it simple to create, share, and price projects.



#### UL 2703 Listed System

Entire system and components meet newest effective UL 2703 standard.



#### 25-Year Warranty

Products guaranteed to be free of impairing defects.

**XR Rails®** ☺

**XR10 Rail**



A low-profile mounting rail for regions with light snow.

- 6’ spanning capability
- Moderate load capability
- Clear and black finish

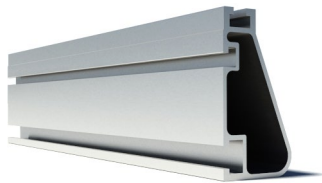
**XR100 Rail**



The ultimate residential solar mounting rail.

- 8’ spanning capability
- Heavy load capability
- Clear and black finish

**XR1000 Rail**



A heavyweight mounting rail for commercial projects.

- 12’ spanning capability
- Extreme load capability
- Clear anodized finish

**BOSS® Bonded Splices**



Bonded Structural Splices connect XR Rails together.

- Integrated bonding
- No tools or hardware
- Self-centering stop tab

**Clamps & Grounding** ☺

**UFO®**



Universal Fastening Objects bond modules to rails.

- Fully assembled & lubed
- Single, universal size
- Clear and black finish

**Stopper Sleeves**



Snap onto the UFO to turn into a bonded end clamp.

- Bonds modules to rails
- Sized to match modules
- Clear and black finish

**CAMO**



Bond modules to rails while staying completely hidden.

- Universal end-cam clamp
- Tool-less installation
- Fully assembled

**Bonding Hardware**



Bond and attach XR Rails to roof attachments.

- T & Square Bolt options
- Nut uses 7/16” socket
- Assembled and lubricated

**Attachments** ☺

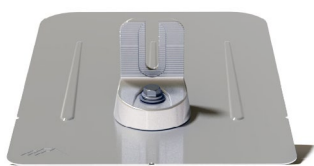
**HUG™ Halo UltraGrip™**



Advanced flashing system adheres to top of shingles.

- Foam-backed mastic seal
- Multi-tiered waterproofing
- Rafter and deck options

**FlashVue®**



Flash, then mount rails with fast and nimble installation.

- Fits between roofing nails
- Easily align pilot holes
- 360° orientation

**FlashFoot2®**



Flash, then mount rails with our classic, robust design.

- Twist-on Cap eases install
- Wind-driven rain tested
- Mill and black finish

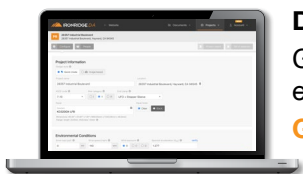
**Knockout Tile**



Replace tiles and ensure superior waterproofing.

- Flat, S, & W tile profiles
- Form-fit compression seal
- Other tile hooks available

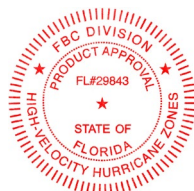
**Resources**



**Design Assistant**

Go from rough layout to fully engineered system. For free.

**Go to [IronRidge.com/design](https://IronRidge.com/design)**



**Endorsed by FL Building Commission**

Flush Mount is the first mounting system to receive Florida Product approval for 2017 Florida Building Code compliance.

**Learn More at [bit.ly/floridacert](https://bit.ly/floridacert)**