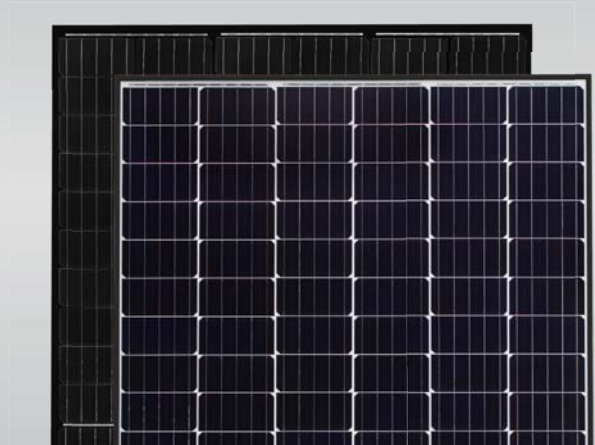


# Eagle HC 60 300-320 Watt

MONO PERC HALF CELL MODULE

Positive power tolerance of 0- +3%



## KEY FEATURES



### Innovative Solar Cells

Five busbar mono PERC half cell technology



### High Efficiency

Higher module conversion efficiency (up to 19.37%) due to lower resistance characteristics



### PID-Free

World's 1st PID-Free module



### Low-Light Performance

Advanced glass technology improves light absorption and retention



### Strength and Durability

Certified for high snow (5400 Pa) and wind (2400 Pa) loads

- ISO9001:2008 Quality Standards
- ISO14001:2004 Environmental Standards
- OHSAS18001 Occupational Health & Safety Standards
- IEC61215, IEC61730 certified products

Nomenclature:

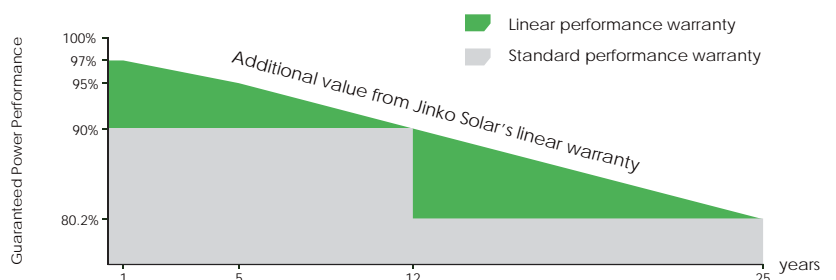
**JKM320M-60HB**

Code	Cell	Code	Backsheet
null	Full	null	White
H	Half	B	Black

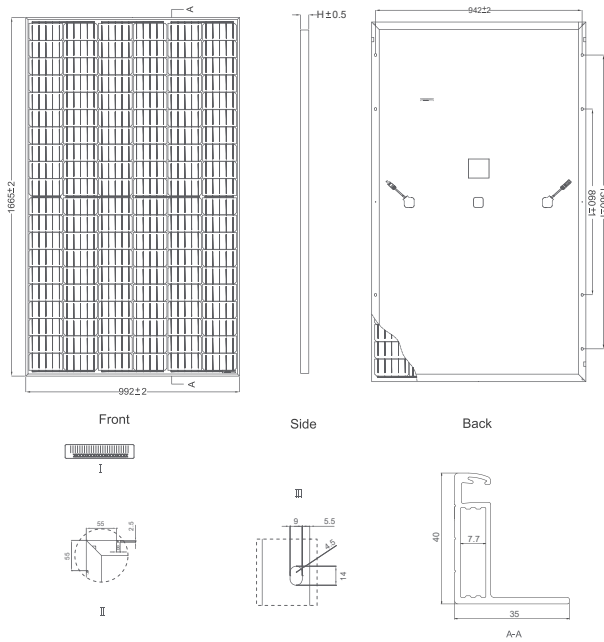


## LINEAR PERFORMANCE WARRANTY

10 Year Product Warranty • 25 Year Linear Power Warranty



## Engineering Drawings

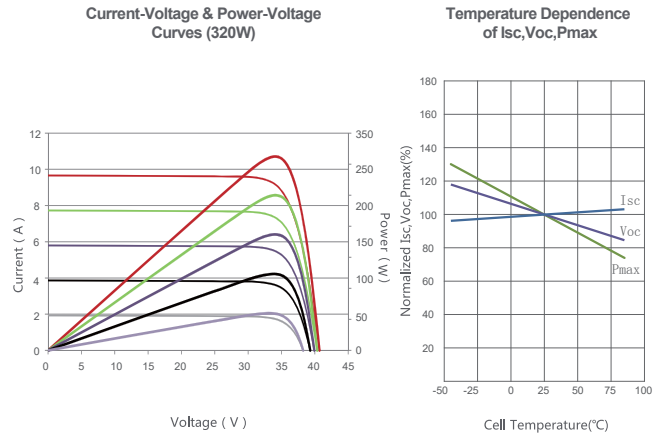


## Packaging Configuration

( Two pallets = One stack )

26pcs/pallet , 52pcs/stack, 676 pcs/40'HQ Container

## Electrical Performance & Temperature Dependence



## Mechanical Characteristics

Cell Type	Monocrystalline PERC 156×156mm (6 inch)
No.of Half-cells	120 (12×10)
Dimensions	1665×992×40mm (65.55×39.05×1.57 inch)
Weight	19.0 kg (41.9 lbs)
Front Glass	3.2mm, Anti-Reflection Coating, High Transmission, Low Iron, Tempered Glass
Frame	Anodized Aluminium Alloy
Junction Box	IP67 Rated
Output Cables	Anode 290mm, Cathode 145mm or Customized Length

## SPECIFICATIONS

Module Type	JKM300M-60H		JKM305M-60H		JKM310M-60H		JKM315M-60H		JKM320M-60H	
	STC	NOCT	STC	NOCT	STC	NOCT	STC	NOCT	STC	NOCT
Maximum Power (Pmax)	300Wp	224Wp	305Wp	227Wp	310Wp	231Wp	315Wp	235Wp	320Wp	239Wp
Maximum Power Voltage (Vmp)	32.6V	30.6V	32.8V	30.8V	33.0V	31.0V	33.2V	31.2V	33.4V	31.4V
Maximum Power Current (Imp)	9.21A	7.32A	9.30A	7.40A	9.40A	7.49A	9.49A	7.56A	9.59A	7.62A
Open-circuit Voltage (Voc)	40.1V	37.0V	40.3V	37.2V	40.5V	37.4V	40.7V	37.6V	40.9V	37.8V
Short-circuit Current (Isc)	9.72A	8.01A	9.83A	8.12A	9.92A	8.20A	10.04A	8.33A	10.15A	8.44A
Module Efficiency STC (%)	18.16%		18.47%		18.77%		19.07%		19.37%	
Operating Temperature(°C)	-40°C~+85°C									
Maximum system voltage	1000VDC(UL)/1000VDC(IEC)									
Maximum series fuse rating	20A									
Power tolerance	0~+3%									
Temperature coefficients of Pmax	-0.37%/°C									
Temperature coefficients of Voc	-0.29%/°C									
Temperature coefficients of Isc	0.048%/°C									
Nominal operating cell temperature (NOCT)	45±2°C									

STC: Irradiance 1000W/m<sup>2</sup> Cell Temperature 25°C AM=1.5

NOCT: Irradiance 800W/m<sup>2</sup> Ambient Temperature 20°C AM=1.5 Wind Speed 1m/s

\* Power measurement tolerance: ± 3%

CAUTION: READ SAFETY AND INSTALLATION INSTRUCTIONS BEFORE USING THE PRODUCT.  
© Jinko Solar Co., Ltd. All rights reserved. Specifications included in this datasheet are subject to change without notice.  
US-MKT-320M-PERC-60H\_1.0\_rev2018