



Lightning-Fast Deployment

- Industry-leading installation time
- Top-down assembly of PV modules
- Integrated fasteners allowing one common bolt for all joints
- Integrated panel grounding
- Only 4 part numbers to order

Maximize Your Project Dollars

- Fits all major solar modules available today
- Available in a variety of panel configurations

Engineered to Last

- The ONLY stainless steel roof ballast system available
- Wind Tunnel tested to 120mph
- ETL Listed to UL2703
- 15-year limited warranty

Superior Customer Service

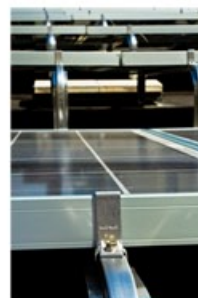
- Engineering support from conception to completion
- Full layout and loading analysis for every project
- Online and onsite installation training available



Fits All Modules



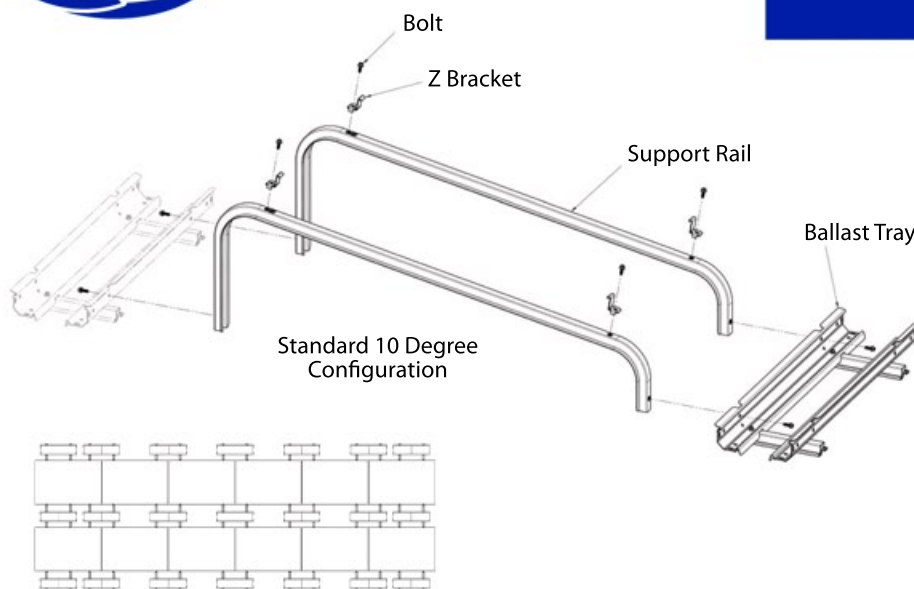
*One Common Bolt
for All Joints*



*Panel Clamps
with Integrated
Grounding*



**Easy to install. Built to last.
With you all the way.**



Specifications

Spacing: Adjustable down to 47.07"

Panel tilt: 0-30 degrees

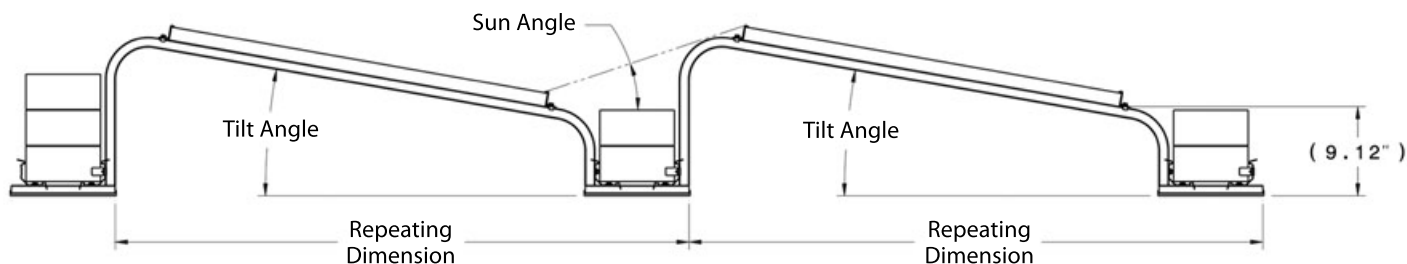
Panel type: Standard Frame or Frameless

Module layout: Standard landscape configuration, custom portrait option available

Module height from roof: 9.12" minimum

Contact surface: EPDM

Grounding: Integrated into clamp



Parts List

Part Name	Part Number	Tilt Angle	Standard		Narrow (new)		Wide	
			Rep Dim. (Inches)	Sun Angle (Inches)	Rep Dim. (Inches)	Sun Angle (Inches)	Rep Dim. (Inches)	Sun Angle (Inches)
Standard Parts								
Support Rail	80295 - xxx	0 degree	Mod. Specific	0	X	X	n/a	0
Support Rail	80458	5 degree	59.1	9.6	X	X	n/a	n/a
Support Rail	80887	5 degree	X	X	50.6	16.44	n/a	n/a
Support Rail	80263	10 degree	58.65	18.5	X	X	66.62	13.65
Support Rail	80844	10 degree	n/a	n/a	51	29	n/a	n/a
Support Rail	80838	10 degree	n/a	n/a	55.5	21.8	n/a	n/a
Support Rail	80271	15 degree	61	25.5	X	X	69	18.4
Support Rail	80273	20 degree	n/a	n/a	X	X	75.67	20
Support Rail	80368	30 degree	Proj. Specific	Proj. Specific	X	X	Proj. Specific	Proj. Specific
Ballast Tray - Standard	80009							
Ballast Tray - Narrow (new)	80674							
Ballast Tray - Wide	80188							
Z-Bracket	80454 - xx	Suffix (in millimeters) determined by module thickness.						
Bolt	80013							
Retainer Nut	80025							
Sizing Tool	80034	For panels 970mm - 1742mm						
Sizing Tool (large panels)	80168	For panels 1743mm - 2603mm						
Accessories								
Kit - Seismic Clip	80129	For use in high seismic areas. 2 Kits per tray required.						
Low Profile Hard Mount Bracket	80133	For hard mounts less than 1" tall. (Eco Fasten)						
High Profile Hard Mount Kit	80706	For hard mounts greater than 1" tall.						
Pad - Ballast Tray	80954 - 412	4" x 12" x .75"						
Pad - Ballast Tray	80954 - 616	6" x 16" x .75"						
Pad - Ballast Tray	80954 - xxx	Custom size pad - .75" thick						
Kit - Microinverter	80672	1 per Enphase M190/210, D380, M215. Includes grounding						
50psf snow load brace kit		Use 1 per rail						

Custom racking options available for: Miasole, First Solar, and other thin-film modules (minimum orders apply), Silicon Energy modules, and high leading-edge module applications

