



## RAYPORT™ • B ROOF BALLAST SYSTEM

**Secure.  
Convenient.  
Simple.**

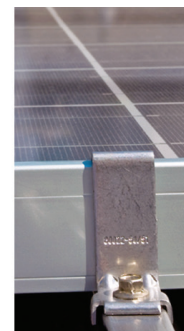
AET's Rayport-B™ ECO roof ballast system is constructed from galvanized steel and provides a functional, lightweight, durable and cost-effective roof top solution.



*Fits most  
modules available*



*One common bolt  
for all joints*



*Panel clamps with  
integrated grounding*



### FAST INSTALLATION

- Industry-leading installation time
- Top-down assembly of PV modules
- Integrated fasteners allowing one common bolt for all joints
- Integrated panel grounding



### COST-COMPETITIVE

- Once again, the industry price leader
- Available in a variety of configurations
- Improved shipping density to reduce costs



### AET ENGINEERED

- Fully galvanized steel
- Wind tunnel tested to 120mph
- ETL listed to UL2703 (pending)
- 15-year limited warranty



### AET CUSTOMER SERVICE

- Engineering support from conception to completion
- Full layout and loading analysis for every project
- Online and onsite installation training available

## 100% on time. 100% on budget. Zero warranty claims.

### SPECIFICATIONS

Spacing: Adjustable down to 51.1"

Panel tilt: 5 or 10 degrees; others available on request

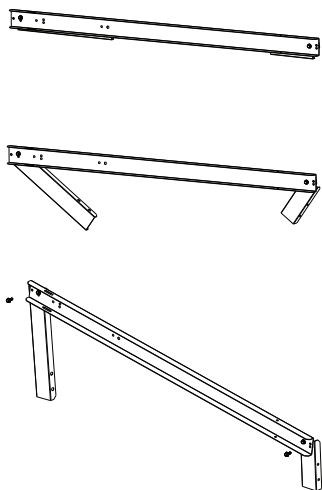
Module layout: Standard landscape configuration

Optional wind deflector available

Contact surface: EPDM

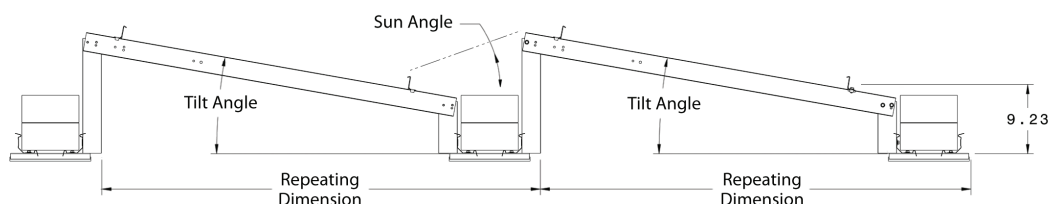
Grounding: Integrated into clamp

Can be shipped unassembled for additional savings



Improved ship density to reduce costs.

- Rails ship folded
- 2 bolts secure legs to build position
- Integrated fasteners for quick assembly



### PARTS LIST

Part Name	Part Number	Tilt Angle	Standard	
			Rep Dim. (In.)	Sun Angle (In.)
Standard Parts				
Support Rail - Standard	81191	5 degree	55.50	11.9
Support Rail - Reduced Row	81193	5 degree	50.60	15.6
Support Rail - Standard	81192	10 degree	58.60	21.1
Support Rail - Reduced Row	81194	10 degree	54.90	25.7
Ballast Tray - Standard	81169			
Z-Bracket	81170-xx	Suffix (in milimeters) determined by module thickness.		
Z-Bracket Nut	81198			
Bolt	81196			
Fixture - Rail Alignment	81253/4/5/6	Based on Support rail used (5/5RR/10/10RR)		
Sizing Tool	80034	For panels 970mm - 1742mm		
Sizing Tool (large panels)	80168	For panels 1743mm - 2603mm		
Accessories				
Low Profile Hard Mount Bracket	81199	For hard mounts less than 1" tall. (Eco Fasten)		
Pad - Ballast Tray	80954-41250	4" x 12" x .50"		
Pad - Ballast Tray	80954-42050	4" x 20" x .50"		
Pad - Ballast Tray	80954-60650	6" x 16" x .50"		
Kit - Seismic Clip	TBD	For use in high seismic areas. 2 Kits per tray required.		
Kit - Wind Deflector	TBD			
Kit - Microinverter Bracket	TBD			

Custom racking options available for: Thin-film modules (minimum orders apply)  
High leading-edge module applications