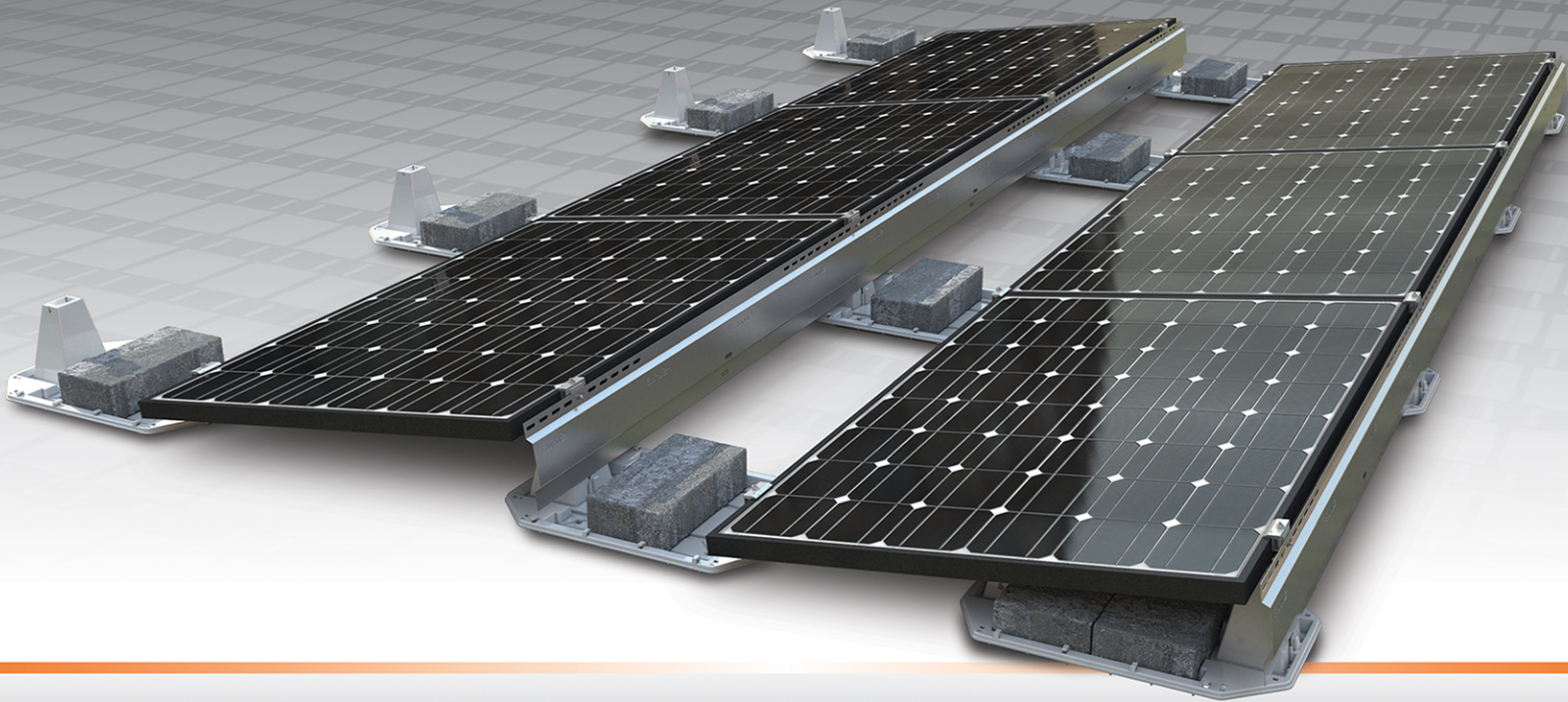


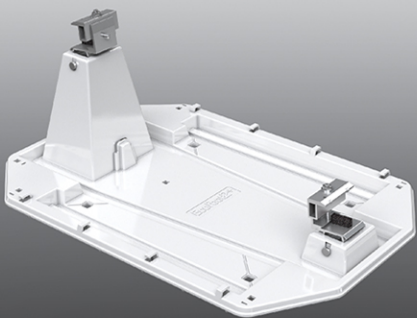
EcoFoot2+[®]

The next step in the EcoFoot Line:

The PV installation professionals tested EcoFoot2, helped us find ways to make it better, and the result is EcoFoot2+[®]. More validation, fewer parts, and increased design flexibility.

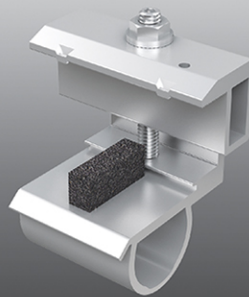


Three main components (six with the push pin & nut)



The Foot

The white UL listed resin's heat deflection properties are an advantage on fully exposed roof tops.



Preassembled Universal Clamp

The new preassembled universal clamp achieves integrated grounding without the use of grounding washers.



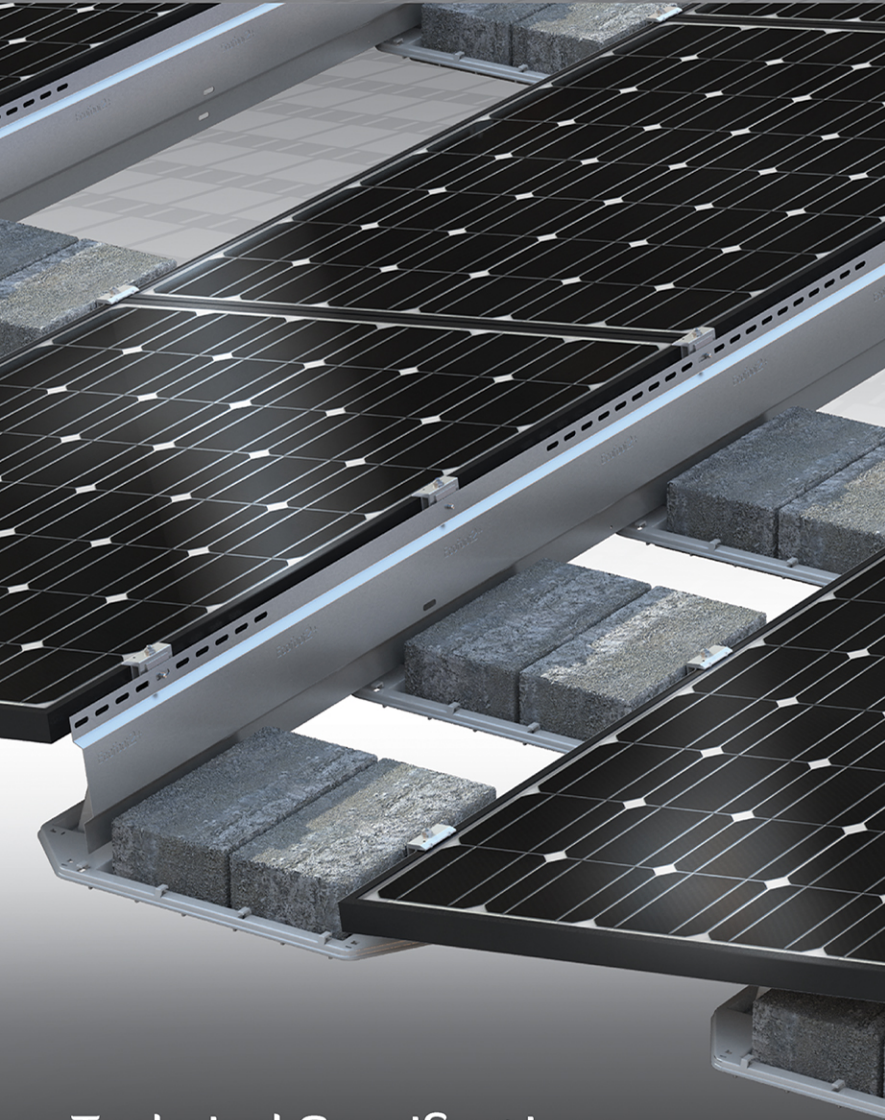
Wind Deflector

Our deflector is galvanized with a G90 steel or if you rather you can elect the aluminum option



EcoFoot2 + Installer Feedback = EcoFoot2+

The EcoFoot2[®] design enhancements increase the product's ability to satisfy the most difficult site or rooftop conditions. The ability to tuck the foot or insert at any point along the module frame allows the system to work in tight spaces, distribute weight more evenly, or increase ballast capacity to support wind speeds up to 150mph.



System Benefits

- Low part count
- Rapid system deployment
- Preassembled Universal Clamp
- Increased design flexibility
- More ballast capacity

Validation Summary

- Fire Tested for commercial rooftops
- SEAOC Seismic Compliant
- Wind Tunnel and CFD Tested
- UL 2703 Qualified, Bonding/Grounding
- Structurally tested

Technical Specifications

Dimensions: 26.5" L x 18.25" W x 8.3" H

Weight: 4 lbs.

Module orientation: Landscape and Portrait

Module tilt angle: 5° & 10°

Module inter-row spacing: 18.5"

Roof pitch: 0°-7°

Ballast requirements: 4" x 8" x 16"

Warranty: 25 years



340 W State St, Unit 22, Athens, OH 45701 | 740-249-1877 | www.ecolibriumsolar.com



Ecolibrium Solar